



# PINCH VALVE SLEEVES

INNOVATION  
QUALITY  
EXPERTISE

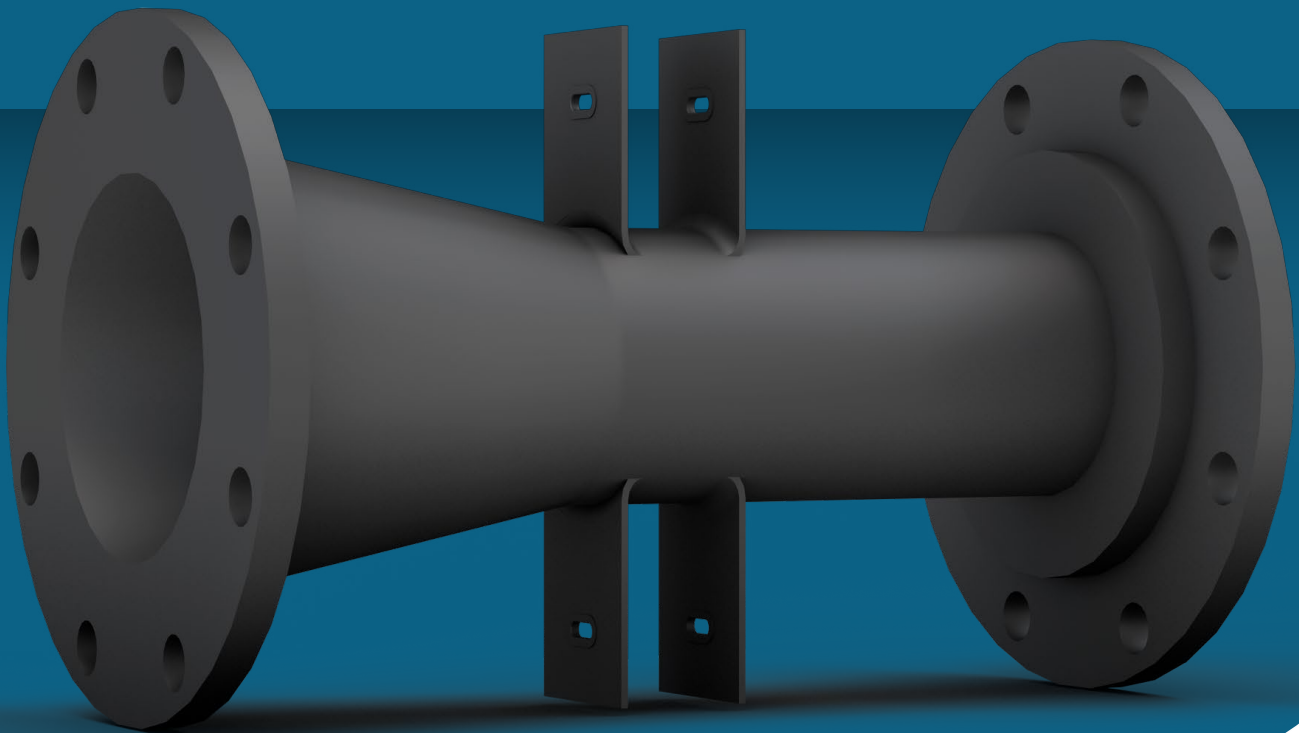
# TRINOVA SLEEVES



Trinova pinch valve sleeves are manufactured in the United States, and offer excellent performance to face most flow media, in particular those with high abrasion characteristics.


Trinova sleeves excel from the more than 30 years of experience in the design, manufacturing and marketing of elastomeric products.

Trinova also offers troubleshooting, analysis application improvement proposals, and sizing selection assistance, to reduce potential cavitation and wear therefore increasing the life expectancy of the sleeve.

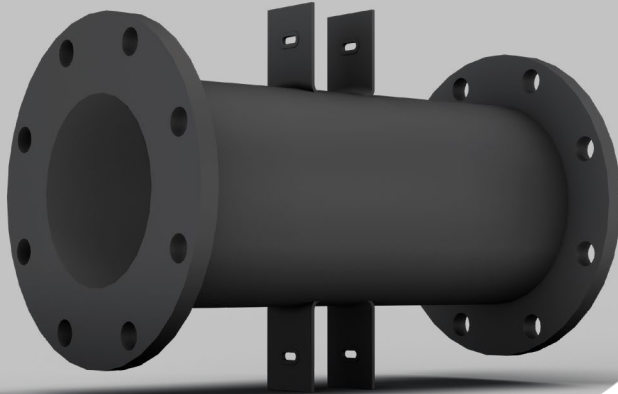


 Size: 1" - 14".

 Type: Full Port, Cone, Cone Funnel.

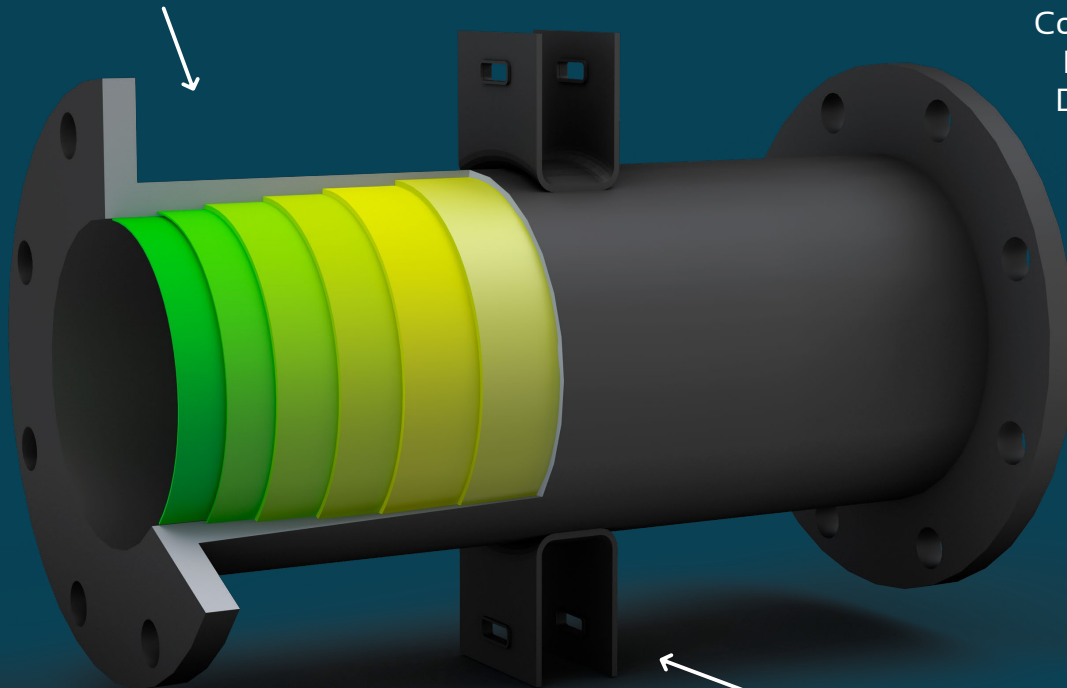
 Materials of Construction: PGR, EPDM, SBRT, NEOPRENE.

\*Other sizes and materials available



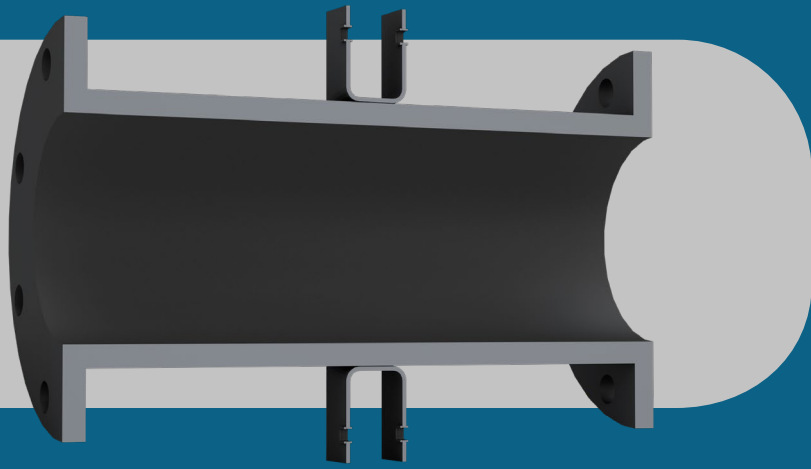
# TRINOVA SLEEVES

Reinforcement and Elastomer layers



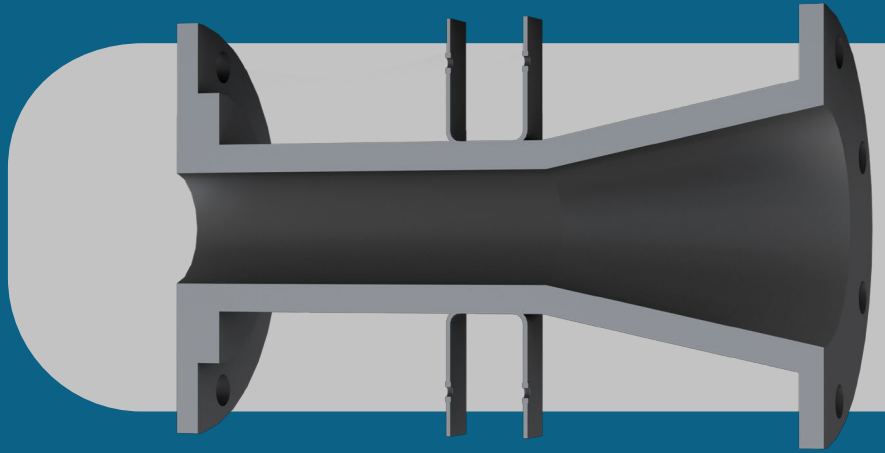
Connection: Full Face  
Flange Standards  
DIN, ANSI, SABS y  
Table D, E

Pinching mechanism tabs

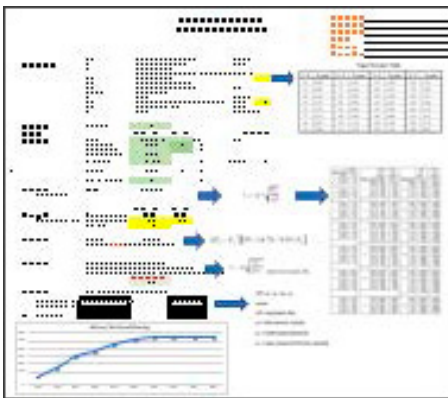
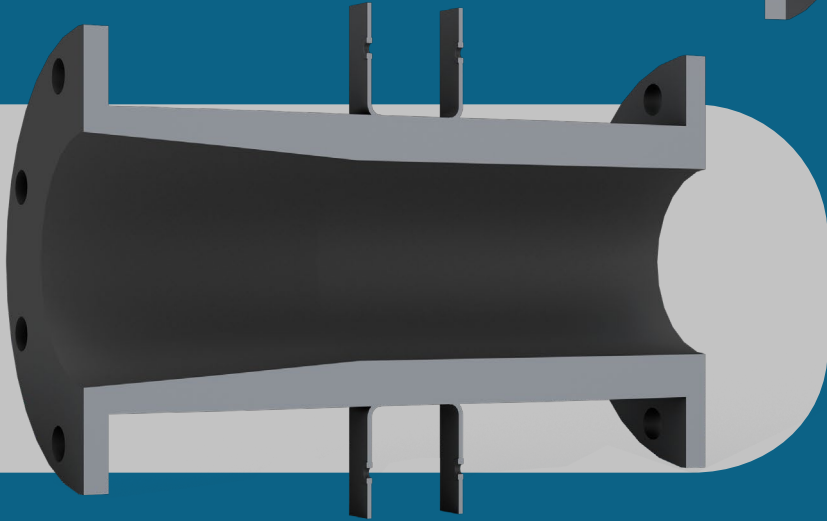


Full Port  
Application ON/OFF

Cone Funnel  
Modulating Applications



Cone  
Modulating High Abrasion  
Applications



Sleeve sizing program available to determine the proper sleeve for each application.

## Approximate weights and dimensions for Trinova Sleeves

Size	A Control (Inch)	A Manual (Inch)	A Pneumatic (Inch)	C (Inch)	Weight App Lbs.
1"	7 1/4	5 1/2	5	4 1/4	1,5
1,5"	8 3/4	6 1/2	7	5	3
2"	10	7	9	6	3,5
2,5"	10 7/8	7 1/2	10	7	6
3"	11 3/4	8	12	7 1/2	9
4"	13 7/8	9	12 1/2	9	12
6"	17 3/4	10 1/2	20	11	23
8"	21 3/8	16	22	13 1/2	35
10"	26 1/2	20	24	16	45
12"	29	24	26	19	55
14"	28	28	30	23	75

Trinova follows the industry standard ISA 75.10.02 for installed face to face dimensions.

