



OPEN FRAME PINCH VALVE OFPV

Trinova's unique one piece stem eliminates friction and wear typically found in other two piece stem designs, while the quick release guide rails facilitate easy removal for quick maintenance and sleeve replacement.

Trinova's patent pending design provides the end user with superior performance over other designs.

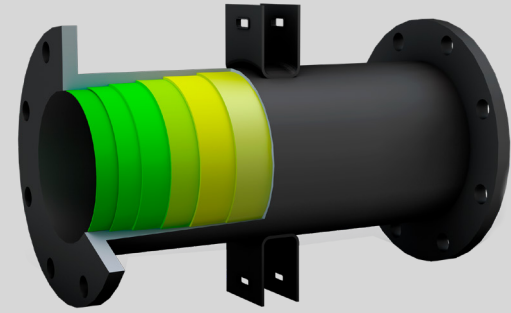


Features:

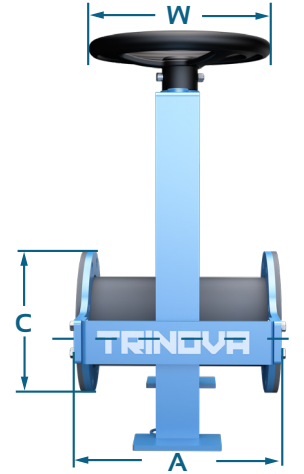
- Open body design. Standard and high pressure.
- ANSI B16.10 lengths making them interchangeable with Gate, Plug, and Ball Valves.
- Longer length sleeve for reduced stress and longer service life.
- Carbon Steel and SS Frame available.
- Center Line Closure - for manual operation, Single Pinch for automated operation.
 - Operating positions clearly visible.
 - 100% full port eliminates clogging and turbulence while minimizing pressure drops.
 - Stem Protector Available.
 - Elastomer sleeve is the only part exposed to the process fluid, Various materials available.
 - Drop-tight bi-directional closure.
 - Flanges drilled for ANSI 125/150#, ANSI 300# or DIN.
 - Full flat-faced integral elastomer flanges.
 - Can be installed in any position.
 - No packing, gaskets or seals to maintain.
 - Manual, Hydraulic, Pneumatic or Electric Actuator available.

TRINOVA SLEEVES

- 📏 Size: 1" - 48"
- 🔧 Type: Full Port, Cone, Cone Funnel, High Pressure.
- 🏗️ Materials of Construction: PGR, EPDM, SBRT, NEOPRENE, BUNA-N, VITON and TEFLON LINER.
*Other sizes and materials available.
- 📡 Sleeve Wear Sensor with communication module available.



Name	Temperature	Compatibility
Pure Gum Rubber PGR	-50 F to 180 F	Good abrasion resistance, tensile strength and resiliency. Good compatibility with weak chemicals, organic acids and alcohols.
EPDM	-50 F to 300 F	Good abrasion resistance at higher temperatures. Good for diluted acids, steam, water and ketones. Not recommended for hydrocarbons.
Neoprene	-50 F to 230 F	Resistant to moderate chemicals, ozone, fats and some hydrocarbons.
SBR	40 F to 180 F	Good abrasion resistance, crack endurance and positive ageing characteristics.
Buna - N	-30 F to 230 F	Resistant to moderate chemicals, kerosene, grease, oils, fats and some hydrocarbons.



VALVE SIZE	DIMENSIONS															
	1	1-1/2	2	2-1/2	3	4	6	8	10	12	14	16	18	20	24	
A Face to Face	5-1/2	6-1/2	7	7-1/2	8	9	10-1/2	16	20	24	28	32	36	40	48	
B	6	7	8-7/16	9-5/16	10-3/4	12-1/4	15-7/8	20-1/8	27-3/4	27-3/4	30-1/2	33-1/2	43	45	48	
C	4-1/4	5	6	7	7-1/2	9	11	13-1/2	16	19	21	23-1/2	25	27-1/2	32	
H1	2-1/8	2-1/2	3	3-1/2	3-3/4	4-1/2	5-1/2	6-3/4	8	9-1/2	10-1/2	11-3/4	12-1/2	13-3/4	16	
H2	5	6-5/8	7-11/16	9-1/8	10-1/4	12-5/16	19-1/2	23-3/4	27-1/2	32	37	41	46	50	55	
W	4	4	8	8	8	12	18	22	22	22	22	22	22	22	22	
Max. Pressure (PSIG)	150	150	150	150	150	150	150	125	100	100	75	50	50	50	50	
Approx. Weight (Lbs.)	5	10	17	25	37	55	140	225	310	460	610	720	740	760	820	

Trinova follows the industry standard ISA 75.10.02 for installed face to face dimensions.



www.trinovausa.com



sales@trinovausa.com