



DUAL PNEUMATIC PINCH VALVE (DPPV)

DUAL's Pneumatic Valve consists of a tough, but flexible full bore sleeve in an enclosed body. Actuated by means of air or Hydraulic Fluid, the valve body acts as an Actuator. When the media is introduced, the sleeve is compressed forming a complete and effective seal.

- Single wearing part.
- Face to face compatible with diaphragm valves.
- No glands which require regular adjustment.
- Pneumatic or hydraulic medium can be used to operate the valve.
- Ideal for remote operations.

FACE TO FACE COMPATIBLE WITH DIAPHRAGM VALVES

PRODUCT SPECIFICATION

BODY:	Cast Aluminium, Cast SG Iron, Stainless Steel enclosed body type.
ELASTOMER SLEEVE:	Gum Black Rubber, EPDM, Chlorobutyl, Neoprene, Vitron and Hypalon.
SIZE RANGE:	50mm - 350mm.
PRESSURE RATING:	10 Bar (for higher pressure consult factory).
FLANGED:	Drilled to SABS, ANSI, BS or DIN.
MATERIAL CERTIFICATION:	Certified chemical and physical test reports can be supplied.
TEMPERATURE:	-50°C to +80°C



FEATURES

The Dual Pneumatic Pinch Valves double-enclosed body with easily replaceable, flexible rubber sleeves.

- Valve can be installed in any position.
- Housing acts as a built-in actuator.
- Long operating life.
- Full bore, low friction loss.
- 100% drip tight closure even with solids in the medium.
- Light weight.
- Seals in both directions.
- High flexibility sleeve design reducing closing forces, improves recovery to full open position.
- Enclosed body protects the sleeve from the environment and contaminants in the event of sleeve failure.
- Fast and easy sleeve change.

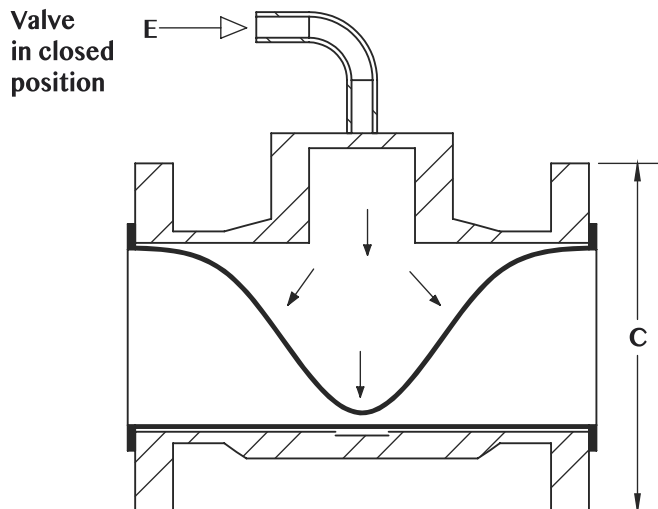
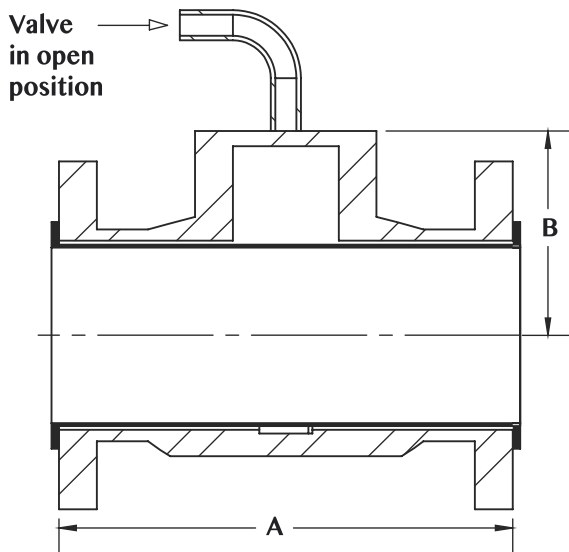


DPPV

HOW THE VALVE OPERATES

The valve closes by means of air or hydraulic pressure placed on the sleeve, through the top of the valve housing. The valve body acts as a built-in actuator.

NOTE: Air pressure must be vented from the valve to permit operating.



SLEEVE MATERIAL

Dual offers the following alternative sleeve materials, providing chemical and abrasive resistance to most media such as;

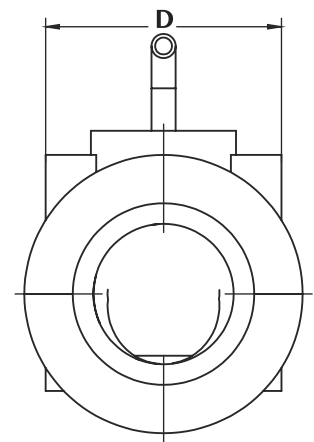
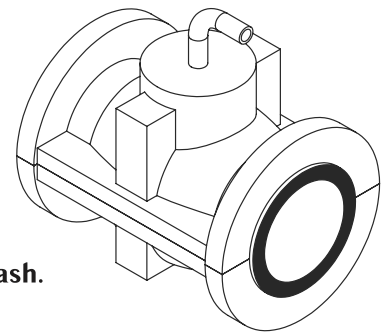
- Polyurethane.
- Natural Red Rubber.
- Natural Black Rubber.
- Neoprene Rubber.
- Nitrile Rubber.
- EPDM Rubber.
- Reduced port sleeve for throttling applications.

SLEEVE DESIGN



APPLICATIONS

- Mining and mineral processing.
- Power generation.
- Sand and gravel.
- Chemical and soda ash.
- Pulp and paper.



VALVE SIZE (mm/inch)	FACE TO FACE (A)				B (mm)	C (mm)	D (mm)	E (BSP)	WEIGHT CAST IRON (kg)	VOLUME (lt)	VALVE CV	
	ISO	ANSI	SABS	DIN							USGPM	m ³ /h
50/2"	178	178	196	178	85	165	245	1/4"	25	0.3	392	89
80/3"	203	200	262	203	100	200	280	1/4"	40	1.2	881	200
100/4"	229	228	312	300	120	220	300	1/4"	30	3	1 556	353
125/5"	254	250	365	325	150	250	330	1/4"	80	5	2 447	555
150/6"	267	266	415	350	165	285	370	1/2"	50	7	3 524	800
200/8"	457	400	530	400	200	340	420	1/2"	80	17	6 658	1 422
250/10"	538	500	645	450	250	405	500	1/2"	110	32	9 789	2 222
300/12"	601	600	760	500	300	460	560	1/2"	140	55	14 097	3 200
350/14"	685	710	990	550	330	520	620	1/2"	200	87	16 000	4 800

Contact Dual Valves for larger sizes. Dimensions are for guidance only - detailed dimension drawings available on request.
All dimensions are in millimeters, unless stated.



CORPORATE HEADQUARTERS:
166 ROTTERDAM ROAD
(CNR ROTTERDAM ROAD & ANTWERP STREET)
APEX BENONI GAUTENG SOUTH AFRICA



PO BOX 12520, BENORYN 1504
TEL: +27 11 422 4326/7
FAX: +27 11 421 7842
email:sales@dualvalves.com

